

Study 1200/700 Quick Guide

sanako

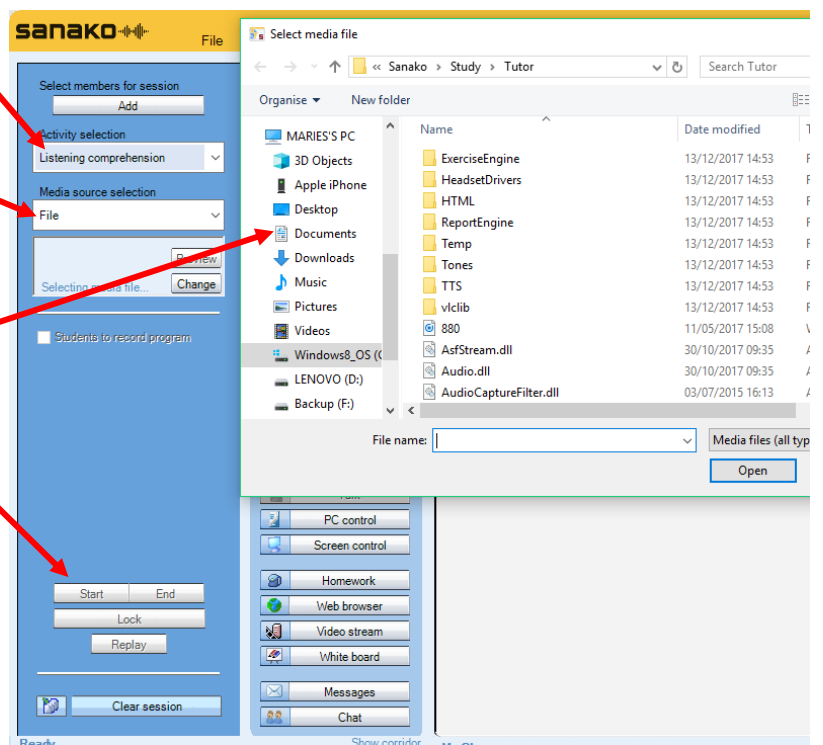
Listening comprehension



- Students need to be logged in, with Sanako Study Student software visible
- Ensure headset is connected, and audio levels correct
- Open Tutor software at the teacher position

STEP 1 – TEACHER SETS UP ACTIVITY

- From the drop-down menu on the left of the Tutor software, select 'Listening comprehension'
- Under 'Media source selection', choose 'File'
- This will open a window for the teacher to browse to and find the file they wish students to listen to. Choose the file and click 'Open'
- Click Start to begin the activity



STEP 2 – STUDENTS BEGIN ACTIVITY

When the teacher has clicked 'Start' the students will be able to hear the selected file in their headsets, but will not have the option to control playback.

The teacher can pause playback at any time by clicking 'Pause'.

STEP 3 – END THE ACTIVITY

When the audio has finished, clicking 'End' will leave students with a copy of the audio, to play again at their own pace if required.

If students do not need to listen again, the teacher can click 'Clear session' to begin a new activity.