

Study 1200/700 Quick Guide



Adjust audio settings



- This method assumes you are using Sanako headsets.
- If you are using headsets with built-in volume and mute control buttons, please ensure that they are switched to the correct position. The audio settings in Sanako's software cannot adjust these – they must be operated manually.

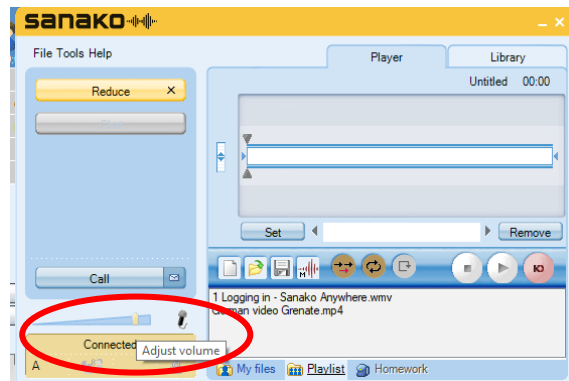
STEP 1 – CHECK THE VOLUME LEVELS ON THE SOFTWARE

If the student cannot hear through the headset, please check the following first:

- Check that the headset is plugged in
- Check that the headset being used is connected to the PC or laptop being used, ie that the student has not picked up the wrong headset
- Check that the volume on the PC or laptop has not been muted – volume icon is in the bottom right hand corner of the screen:

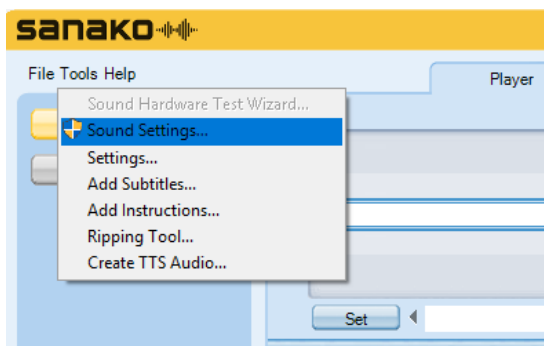


The volume control for the student software is a slider control on the left hand side of the software. Ensure that the slider is positioned appropriately.



STEP 2 - RUN THE SOUND SETTINGS

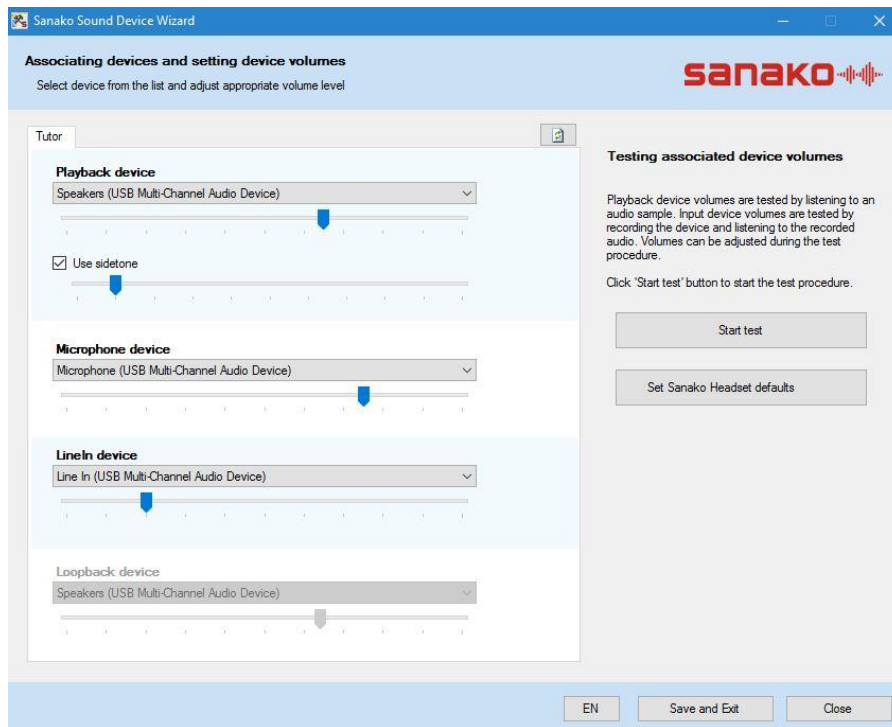
1. If the above suggestions have been checked, run the sound settings wizard in the student software – select 'Tools' – 'Sound Settings'



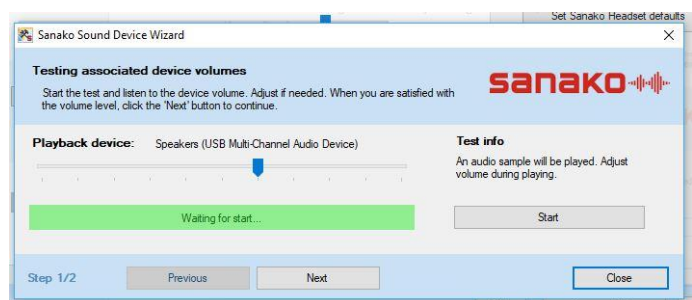
2. Make sure you have the correct devices selected, then set the required levels according to your installation. Each system will vary slightly, but as a guide, we recommend:

Windows 7
 Playback 50%
 Side Tone 10%
 Mic 30%

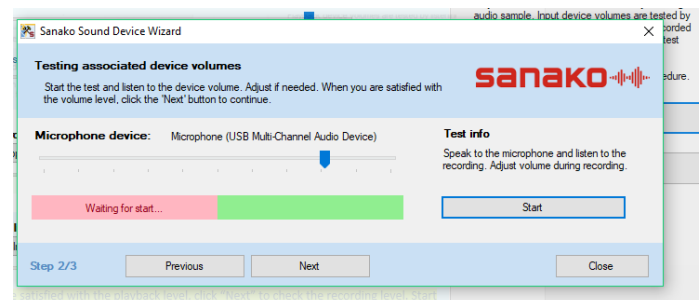
Windows 10
 Playback 85%
 Side Tone 10%
 Mic 95%



3. Check that the settings are correct by clicking "Start test", and adjusting the level if required when the audio plays.



4. When you are satisfied with the playback level, click "Next" to check the recording level. Start the test, and speak into the microphone while the red strip is moving. When the green section is reached, you will hear your recording played back and can adjust the levels accordingly.



5. Once all the settings are as required, close the dialog box, then click "Save and Exit" at the bottom of the window to save the settings.