

Study 1200/700 Quick Guide

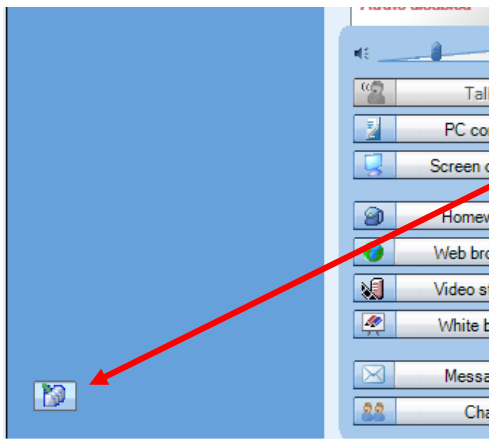
sanako



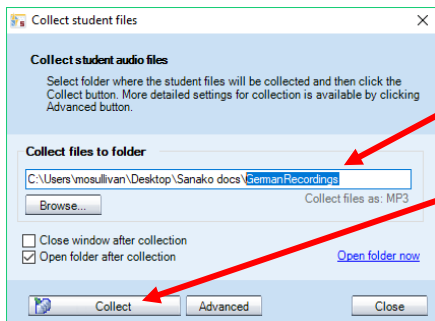
Collect student files

- Students need to be logged in, with Sanako Study Student software visible
- Ensure headset is connected, and audio levels correct
- Open Tutor software at the teacher position

STEP 1 – COLLECT STUDENT RECORDINGS



- When you are ready to collect your students' work, click the collect audio button at the bottom left of the Tutor software



- Change the folder name at the end to something you will easily find again
- Click 'Collect' to collect student work
- Files will be collected and will appear with the student log-in names, so you can immediately identify students' work