

# Study 1200/700 Quick Guide



## Differentiation

*Put students into different groups to allow them differentiated activities*



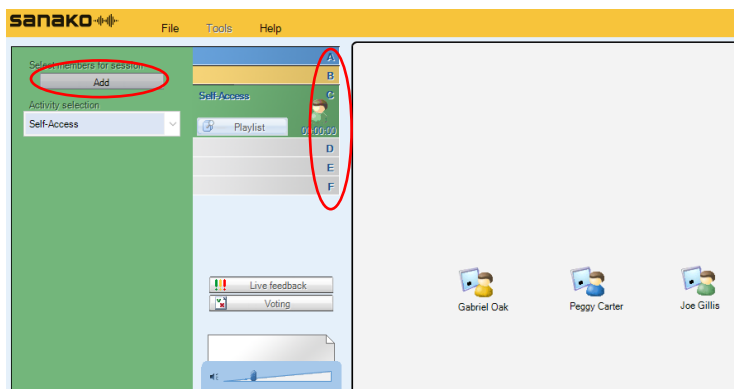
- Students need to be logged in, with Sanako Study Student software visible
- Ensure headset is connected, and audio levels correct
- Open Tutor software at the teacher position

### STEP 1 – ALLOCATE GROUPS

By default, all students are in session A at start-up. This is indicated by the blue colour on both the student icons and the background on the left of the Tutor software. (NB students must be logged in to perform this task, therefore it is not possible to put students into groups before the lesson begins.)

A further five 'sessions' or groups (B to F) are available, which show in grey if no students are allocated.

To allocate students to different groups:



- Click on one of the letters B to F. The left portion of the Tutor software will change colour.
- Click on the 'Add' button, then click on the students you wish to allocate to this group. The icon colour will change to match the group colour.
- When you have selected all the required students for this group, click on 'Add' to end the process.

Repeat if required to allocate students to a maximum of six groups.

### STEP 2 – SET ACTIVITIES

To set activities for different groups:

- The drop-down menu relates to the group selected and not the rest of the class. For example in the image above, selecting any activity from the drop-down menu (eg Discussion, Telephone) will only include students in group C (green). Click the blue or yellow band to change group selection to set an activity for the other students.
- Use the playlist to allocate different tasks for students in the different groups.