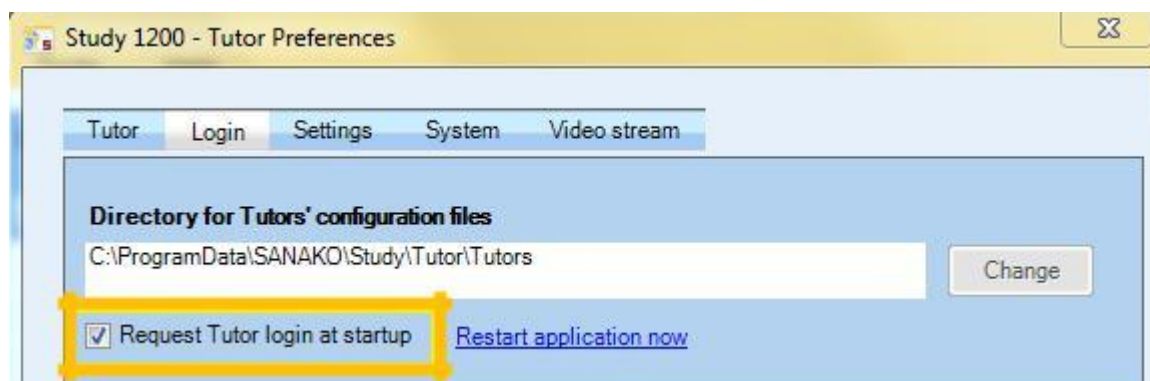


# Study 1200/700

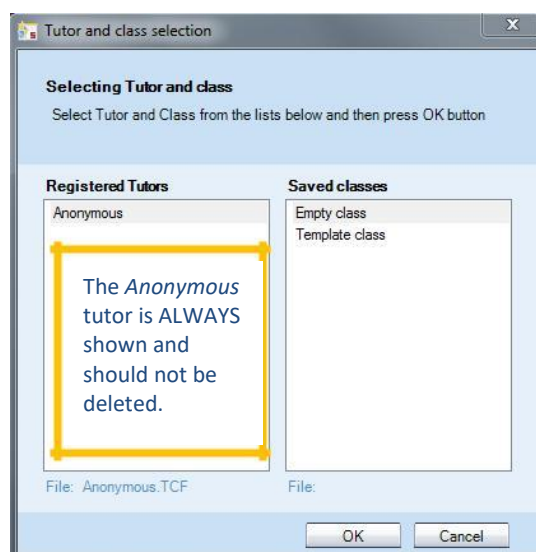


## Adding new tutors

Make sure that the 'Request Tutor login at startup' option (shown below) is ticked in the **Tools – Preferences – Login** tab of the teacher software.



This will ensure that the tutor selection screen will appear whenever the Study Tutor software is opened.



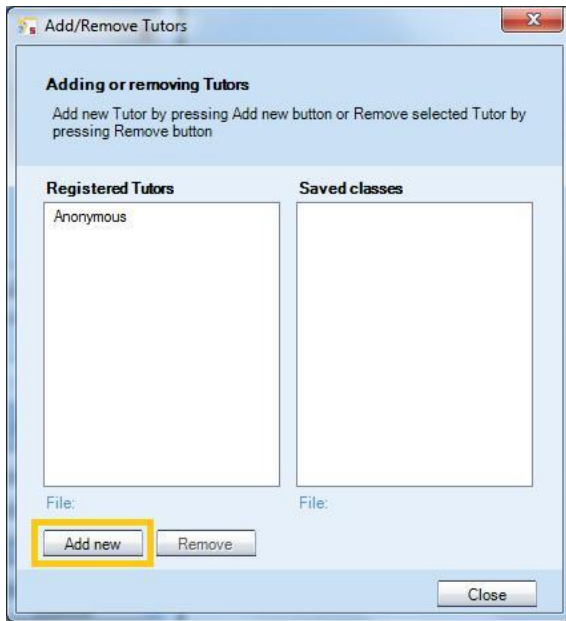
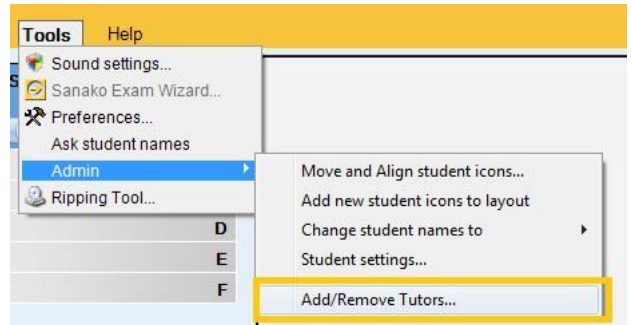
### STEP 1 – CREATE A NEW DIRECTORY FOR EVERY TUTOR IN THE SessionFilePath LOCATION

In the example TCF file shown above, the SessionFilePath is 'E:\Study\Anonymous' and you need to create a set of directories there for each new tutor.

For example, if the teachers to be added were called Anne Jones and John Smith then you would create two directories at E:\Study\AnneJones and E:\Study\JohnSmith respectively. For every teacher to be added you need to create a folder for them in the default PLAYLIST location on your network.

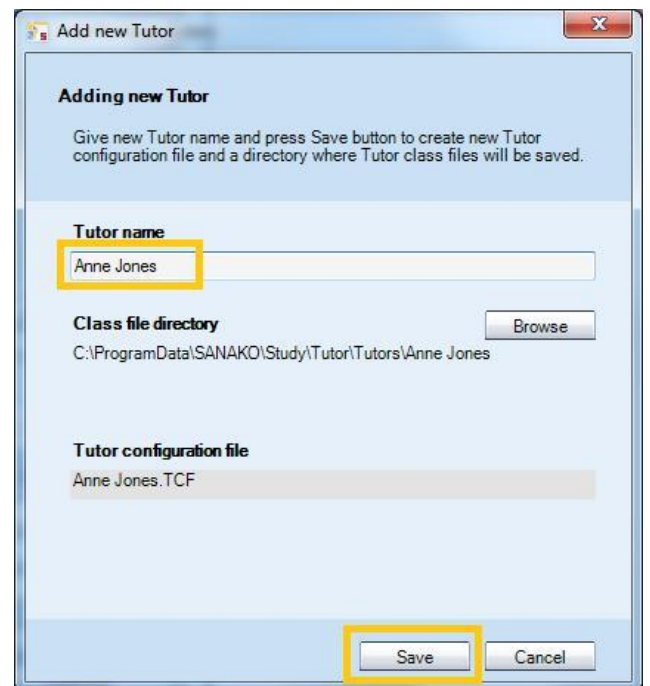
## STEP 2 – CREATE A NEW TCF FILE FOR EVERY TUTOR

Select **Tools – Admin – Add/Remove Tutors...**



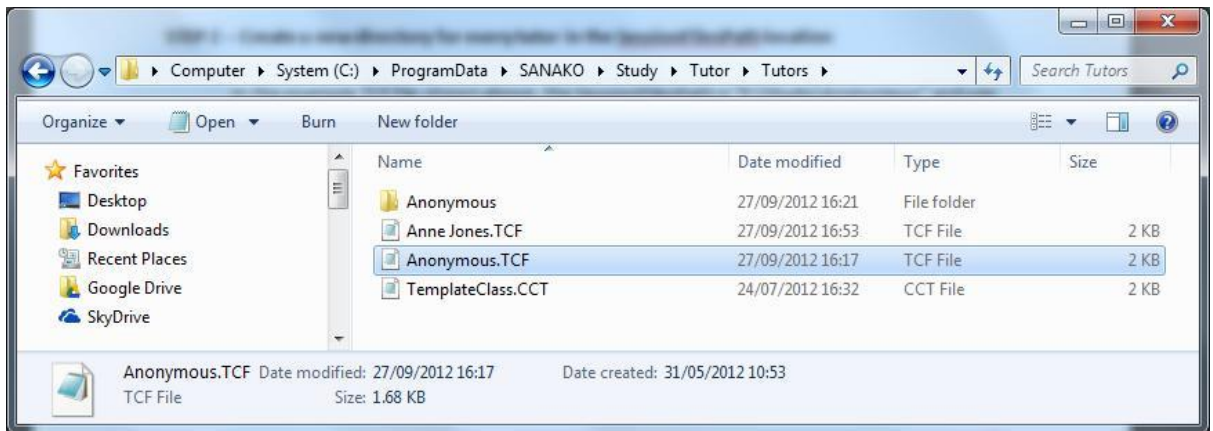
Select the **Add new** icon

In the 'Add new tutor' window, type in the name of the tutor to be added and click **Save**. Continue this process until all the teachers have been added.





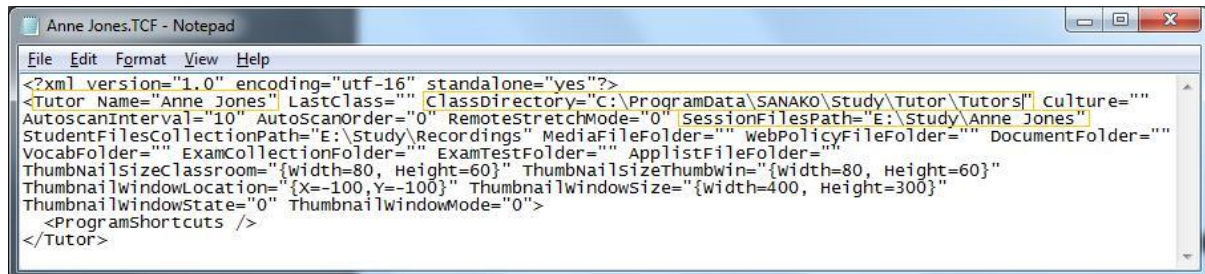
You will then note that the file (Anne Jones.TCF) has been added to the same folder as the Anonymous.TCF file. The folder is **C:\ProgramData\SANAKO\Study\Tutor\Tutors**.



### STEP 3 – EDIT THE TEACHER CONFIGURATION (TCF) FILES CREATED FOR EACH TUTOR

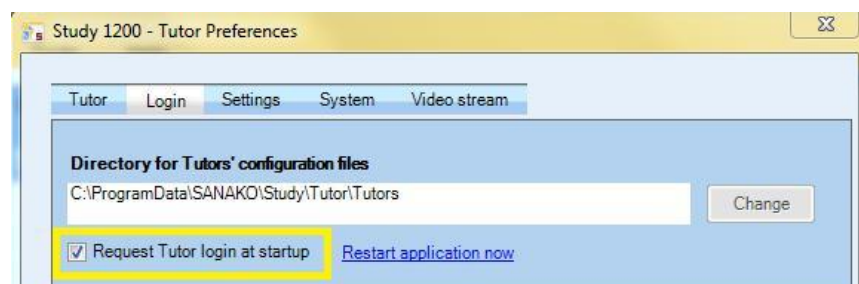
Right click and edit the TCF files one at a time and for every TCF file please check –

- The **Tutor Name** value equals the correct teacher name
- The **SessionFilePath** is set to the directory for the correct teacher
- The **ClassDirectory** value is the same for all TCF files



### OPTIONAL STEP 4 – MOVE THE TCF FILES TO A SHARED NETWORK LOCATION

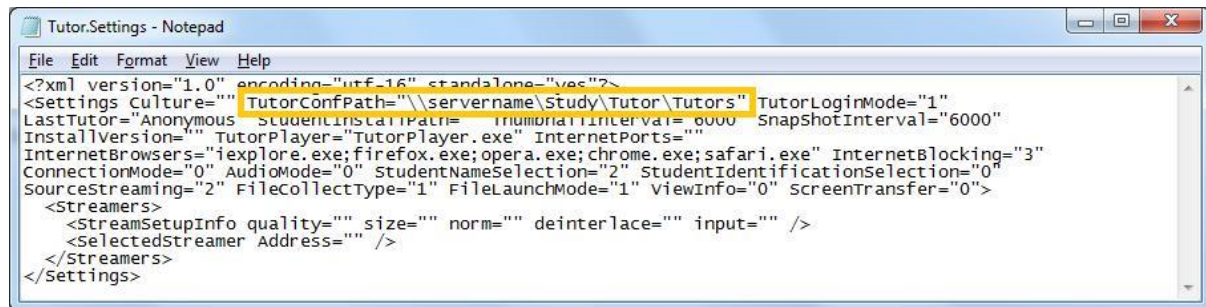
If you want to use the Study software in more than one room then you can simply change the 'Directory for Tutors' configuration files' option below by clicking the



**Change** icon. Please note that the change icon will only appear when you have added more than one tutor.

To point the Study Tutor installs to this shared network folder in any other classroom simply locate the **Tutor.Settings** file on the Tutor PCs and edit it.

The Tutor.Settings file is located in the **C:\ProgramData\SANAKO\Study\Tutor** folder and a typical example of its contents is shown below.



```
File Edit Format View Help
<?xml version="1.0" encoding="utf-16" standalone="yes"?>
<Settings Culture="" TutorConfPath="\\servername\Study\Tutor\Tutors" TutorLoginMode="1"
LastTutor="Anonymous" StudentInstallPath="triumph" Interval="6000" SnapshotInterval="6000"
InstallVersion="" TutorPlayer="TutorPlayer.exe" InternetPorts=""
InternetBrowsers="iexplore.exe;firefox.exe;opera.exe;chrome.exe;safari.exe" InternetBlocking="3"
ConnectionMode="0" AudioMode="0" StudentNameSelection="2" StudentIdentificationSelection="0"
SourceStreaming="2" FileCollectType="1" FileLaunchMode="1" ViewInfo="0" ScreenTransfer="0">
  <Streamers>
    <StreamSetupInfo quality="" size="" norm="" deinterlace="" input="" />
    <SelectedStreamer Address="" />
  </Streamers>
</Settings>
```

Simply change the **TutorConfPath** value to point to the shared network folder containing the TCF files. When you then start the Study Tutor software the teacher list will appear exactly the same as any other room.