

Study 1200 Quick Guide

sanako

Model imitation



- Students need to be logged in, with Sanako Study Student software visible
- Ensure headset is connected, and audio levels correct
- Open Tutor software at the teacher position

STEP 1 – TEACHER SETS UP ACTIVITY



- From the drop-down menu on the left of the Tutor software, select 'Model imitation'

- Click Start to begin the activity

STEP 2 –BEGIN ACTIVITY

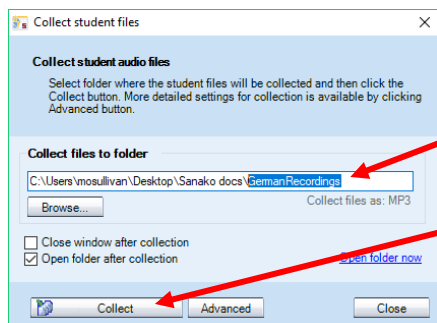
When the teacher has clicked 'Start', both teacher and student microphones are active, and recording has automatically begun.

The teacher asks questions or makes statements, and waits until students have answered, repeated or translated (depending on the purpose of the activity).

STEP 3 – END THE ACTIVITY

When the activity is finished, the teacher clicks 'End' at the bottom of the screen to end the activity.

The teacher will be prompted to save the student recordings.



- Change the folder name at the end to something you will easily find again

- Click 'Collect' to collect student work

Files will be collected and will appear with the student log-in names, so that students' work can be immediately identified.

Click 'Clear session' to remove the pairings and begin a new activity.