

# Study 1200/700 Quick Guide

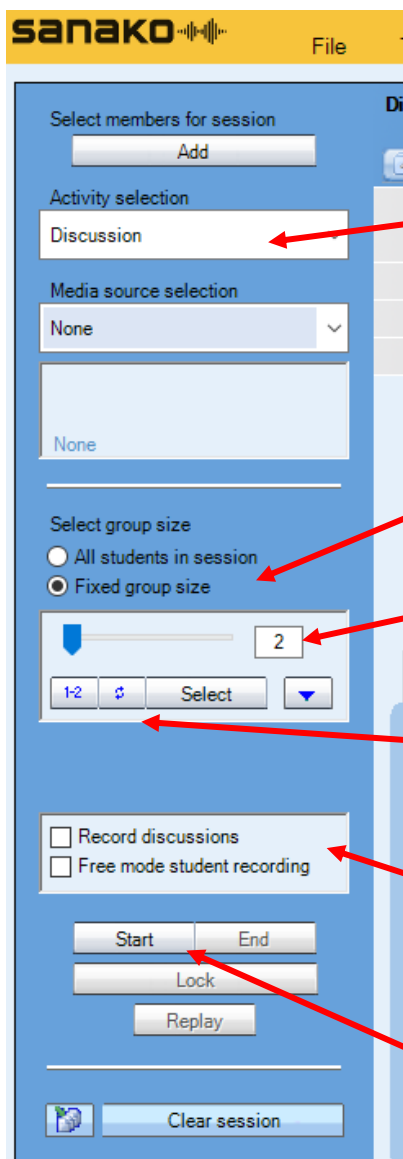
sanako


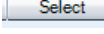
## Pair work or discussion



- Students need to be logged in, with Sanako Study Student software visible
- Ensure headset is connected, and audio levels correct
- Open Tutor software at the teacher position

### STEP 1 – TEACHER SETS UP ACTIVITY



- From the drop-down menu on the left of the Tutor software, select 'Discussion'
- Select 'Fixed group size' to choose the size of the groups. 'All students' will put every student in your class into the same conversation – most of the time this is not what you want to do!
- Decide on the number of students in each group
- Clicking  will randomly group/pair the students. Choosing  will allow the teacher to manually choose the groups/pairs
- If the teacher wishes to record the conversations, tick one of the boxes. 'Record discussions' automatically records everything. 'Free mode' allows students to decide when they are ready to record.
- Click Start to begin the activity

## STEP 2 – STUDENTS BEGIN ACTIVITY

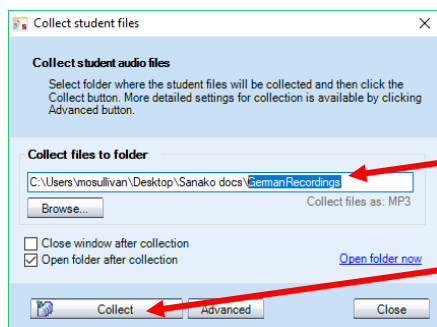
When the teacher has clicked 'Start' the students will be able to hear and speak to each other.

At any time, the teacher can listen in to the conversation of any pair/group by clicking on the icon of any of the students. Click 'Discuss' to speak to the group (they are only able to hear you, not reply).

## STEP 3 – END THE ACTIVITY

When the activity is finished, the teacher clicks 'End' at the bottom of the screen to end the activity.

If the teacher had chosen to record the conversations, they will be prompted to save the student recordings.



- Change the folder name at the end to something you will easily find again

- Click 'Collect' to collect student work

Files will be collected and will appear with the student log-in names, so that students' work can be immediately identified.

Click 'Clear session' to remove the pairings and begin a new activity.