

Study 1200/700 Quick Guide

sanako

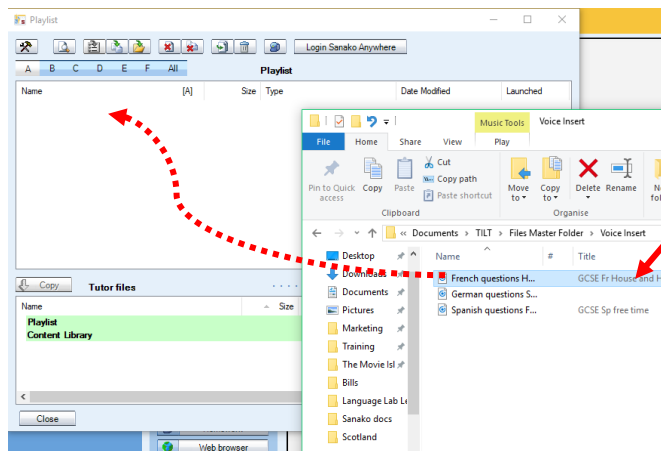
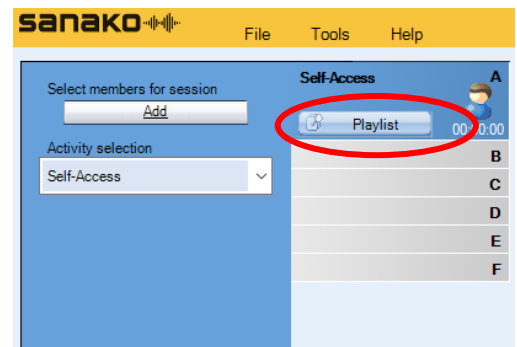
Using the Playlist




- Please note this is the Quick Guide version. For more detailed information, please consult the full Teacher Training Guide
- Open Tutor software at the teacher position

STEP 1 – OPEN THE PLAYLIST

- Click on 'Playlist' in the Tutor software



- Open a window on your computer and navigate to the file you wish to use
- Drag and drop the file(s) into the top section of the playlist. Add as many files as you require for the lesson. The files will be waiting for students to access as soon as they log-in to their computers.

- At the end of the lesson, remove files from the playlist using the  icon or the delete button on your keyboard. This will prevent students from different classes from accessing files which are not relevant to them.